



134 Sand Park Road
Cedar Grove, NJ 07009
Phone: 973 857-6480 Fax: 973 857-4943
E-Mail: Sales@radiantwraps.com
Web Site: www.radiantwraps.com

REMOVING EXISTING BACK PANELS & SUPPORT BRACKETS



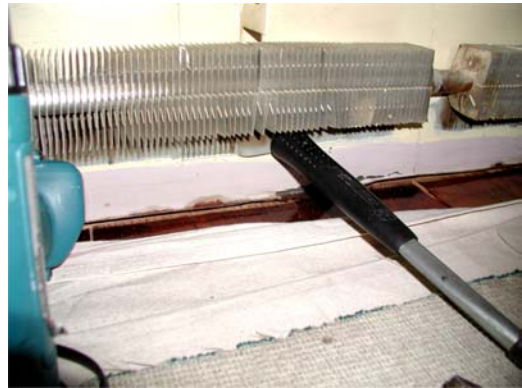
#1 – Remove all existing snap on or slide on components to prepare enclosure for removal.



#2 – Use hammer or cat's paw to loosen support brackets. This style of support bracket can be flattened and slipped out with the existing back panel.



#3 – Gently raise the height of the fins to clear the bottom of the bracket and use the head of a hammer to flatten the bracket.



#4 – The bottom of the bracket has now been flattened against the back panel so that it will clear the heating element fins.



#5 – Loosen any paint or caulk seals and make sure all nails anchoring the back panel to the wall have been removed.



#6 – Carefully slide the back panel up and out.